

The following is an archived BATalk newsletter. Some links may no longer be valid.



In This Issue...

Professional Growth

Networking

Prepare for Emergencies

Tax Rate Tool

Quick Links:

[BAT Home](#)

[BAT Certification Status](#)

Contact Us:

Washington

Certification Services

1221 D Street NE

Auburn, WA 98002

Phone: 253-288-3357

www.wacertservices.org



Forward to a
Friend

Issue 16 - Spring 2017

BATalk - is an electronic newsletter sharing important certification program information with Washington's Backflow Assembly Testers (BAT).

IMPORTANT UPDATE

PROFESSIONAL GROWTH PERIOD IS HALF OVER

The professional growth period for all Backflow Assembly Testers certified before January 1, 2016 will end December 31, 2018. That means that for most BATs the time they have to pass the professional growth examination is already half over.

Passing the professional growth examination earlier does not affect when a BAT must meet the requirement the next time. For example, a BAT in this reporting period that passes the professional growth examination in June 2017 will have to pass it again between January 1, 2019 and December 31 2021. A BAT that passes the examination right before the December 31, 2018 deadline will have to pass it again during the same three-year period, between January 1, 2019 and December 31, 2021.

You can take the BAT professional growth examination any time during your reporting period. Why wait?

[Apply online now!](#)

What are the advantages of taking the professional growth examination earlier?

- More flexibility in choosing your preferred examination date and location
- Better opportunities for identifying and enrolling in optional refresher training
- Avoiding your busy work periods or winter driving conditions
- Plenty of time to practice and apply for another examination if you do not pass the first time
- **Less stress - check it off your to-do list now!**

NETWORKING WITH CROSS-CONNECTION PROFESSIONALS

Becoming a member of a professional organization has many benefits including networking, professional development, and industry advancement. There are two organizations in Washington specifically for individuals involved in the field of cross-connection control and backflow testing.

Membership in the [Western Washington Cross-Connection Prevention Professionals Group](#) is for anyone interested in public safety and protecting potable water. If you administer a program; provide contracting services; or test and repair backflow assemblies, "The Group" offers information and training to assist you.

The [Spokane Regional Cross Connection Control Chapter](#) of the American Backflow Prevention Association (ABPA) was formed in 1986 and is devoted to protecting the quality of drinking water. "SRC4" provides training and resources for members that include water purveyors, health officials, plumbers, backflow assembly testers, and others with an interest in cross connection control.

Whether you're interested in strengthening your network, furthering your career, or broadening your knowledge, consider joining a professional organization that provides an opportunity for all of this and more.

PREPARE FOR AN EMERGENCY WITH A FIRST AID APP

How long has it been since you took a first aid class? Did you know that most people forget two-thirds of what they learned in the first week, and almost everything after a month! Get instant access to information on handling the most common first aid emergencies with the American Red Cross basic first aid mobile application. Visit <http://www.redcross.org/get-help/prepare-for-emergencies/mobile-apps> to learn more about the free download.

TAX RATE LOOK-UP TOOL

A representative of Washington State Department of Revenue provided tips on taxes at a recent BAT Forum sponsored by the Western Washington Cross-Connection Prevention Professionals Group. Following are some general guidelines for BATs to follow when collecting taxes on services they provide.

When do I collect "Sales Tax"?

Sales tax must be collected if the backflow assembly requires a repair, even if the repair just requires flushing or cleaning and does not require the use of spare parts. Both the cost of the repair and the cost of the test are subject to sales tax.

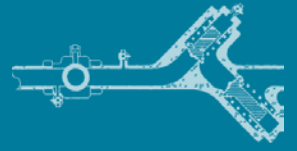
When does "Use Tax" apply?

Use Tax is applied to parts or services when sales tax hasn't already been collected. Use tax only applies to consumables that are not for resale.

The location of the work dictates the tax rate you must charge. To make sure you charge the correct tax rate, take advantage of this [Tax Rate Lookup Tool](#).

If you have questions about what taxes you should charge, contact Department of Revenue to request a written [binding ruling](#). This will ensure that you are collecting taxes correctly.

Washington Certification Services (WCS)
1221 D Street NE | Auburn, WA 98002



Copyright © 2016. All Rights Reserved.